

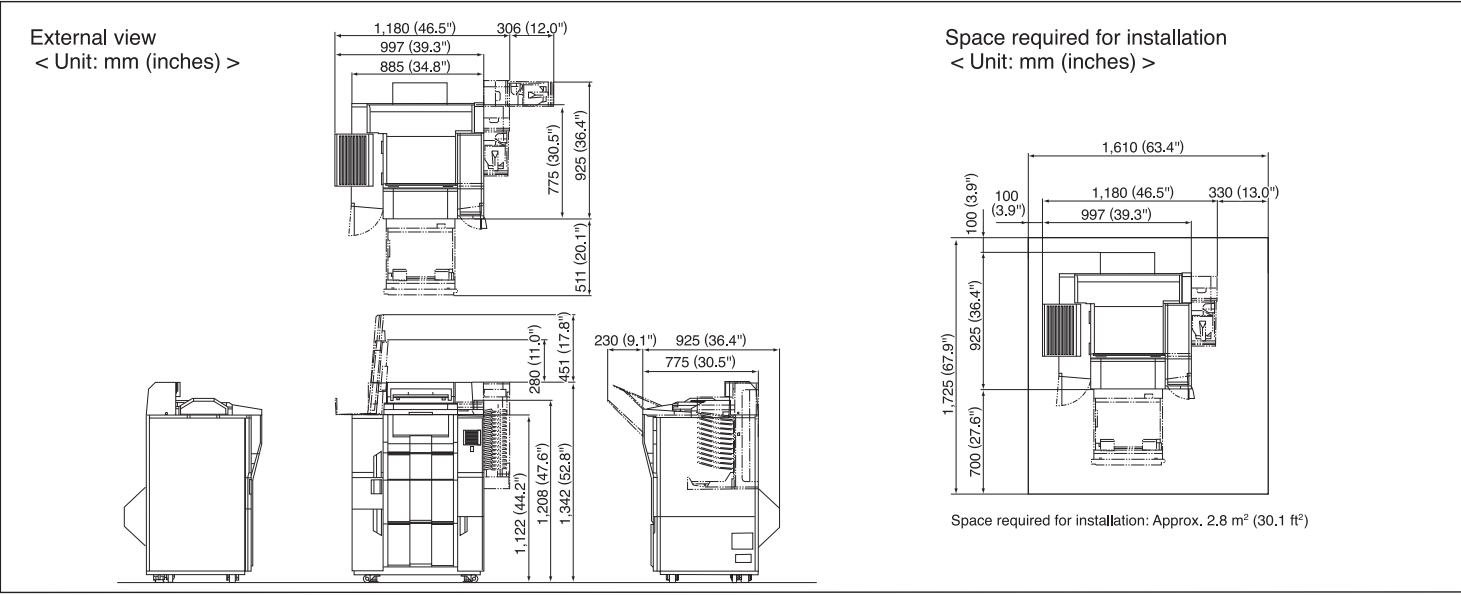
Specifications					
Printing system		Piezoelectric inkjet system			
Print resolution		720 x 720 dpi: 6 gradations per dot (5 dot sizes + no dot (White)) / 1,440 x 1,440 dpi: 4 gradations per dot (3 dot sizes + no dot (White))			
Print size	Roll paper	Paper widths: 89, 102, 127, 152, 203, 254, 279, 305 mm (3.5", 4", 5", 6", 8", 10", 11", 12") Paper advance lengths: When the widths are 89 and 102 mm (3.5", 4") : 88.9(3.5") to 457.2 mm (18") When the width is 127 mm (5") : 88.9(3.5") to 840.0 mm (33") When the widths are 152, 203, 254, 279 and 305 mm (6", 8", 10", 11", 12") : 88.9 (3.5") to 1,400.0 mm (55")			
	Sheet paper	Paper widths: 203 (8") to 330 mm (13") Paper advance lengths*2: 178 (7") to 625 mm (24.6")			
Maximum print size		Roll paper: 305 x 1,400 mm (12" x 55") Sheet paper: 330 x 635 mm (13" x 25")			
Paper types*1	Roll paper	Noritsu proprietary inkjet photo paper Glossy Paper widths: 102, 127, 152, 203, 254, 305 mm (4", 5", 6", 8", 10", 12") Paper roll length: 100 m (328 feet) Semi-glossy Paper widths: 102, 127, 152, 203, 254, 305 mm (4", 5", 6", 8", 10", 12") Paper roll length: 100 m (328 feet) Pearlescent Paper widths: 203, 254, 305 mm (8", 10", 12") Paper roll length: 50 m (164 feet)			
		Sheet paper (Sold by Noritsu)	Print size*2	Double-sided sheet paper (Thin, Semi-glossy)	Double-sided sheet paper (Thick, Semi-glossy)
	203 x 203 mm (8" x 8")		Supported		
	210 x 297 mm (8.3" x 11.7")		Supported	Supported	
	254 x 203 mm (10" x 8")		Supported		
	279 x 216 mm (11" x 8.5")		Supported	Supported	
	305 x 305 mm (12" x 12")		Supported		
	254 x 178 mm (10" x 7")				Supported
	Ink		4 colors of dye ink: Y (Yellow), M (Magenta), C (Cyan), BK (Black) Volume: 500ml per color		
Dimensions		See "External view" below			
Weight		Printer with the 4-order print sorter unit: Approx. 232.5 kg (512.6 lbs) (excluding options, paper and ink cartridges) Printer with the 12-order print sorter unit: Approx. 242.4 kg (534.4 lbs) (excluding options, paper and ink cartridges)			
Power specifications		AC 100-120V / 200-240V 1P2W			
Rated power capacity		1,440VA or less			

\*1 Paper types are subject to change without notice.  
\*2 Indicates the size of the print as it comes out of the printer. Each sheet paper size is 10 mm longer (in the advance length direction) before it is printed.

Print capacity for roll paper (prints/hour)**2		
Print size (Width x Advance length)	Print resolution: 720 dpi Prints/hour (Approx.)	Print resolution: 1,440 dpi Prints/hour (Approx.)
127 x 89 mm (5" x 3.5")	1,180	404
152 x 102 mm (6" x 4")	950	320
89 x 127 mm (3.5" x 5")	1,031	350
102 x 152 mm (4" x 6")	825	275
127 x 178 mm (5" x 7")	639	209
203 x 102 mm (8" x 4")	633	213
203 x 254 mm (8" x 10")	280	89
203 x 305 mm (8" x 12")	236	74
254 x 203 mm (10" x 8")	305	97
254 x 305 mm (10" x 12")	209	65
305 x 203 mm (12" x 8")	274	86
305 x 254 mm (12" x 10")	223	69
305 x 457 mm (12" x 18")	127	39
305 x 914 mm (12" x 36")	55	19
305 x 1,400 mm (12" x 55")	33	12

Print capacity for sheet paper (prints/hour)**3		
Print size (Width x Advance length)	Print resolution: 720 dpi Prints/hour (Approx.)	Print resolution: 1,440 dpi Prints/hour (Approx.)
203 x 203 mm (8" x 8")	161	61
210 x 297 mm (A4 / 8.3" x 11.7")	129	48
254 x 178 mm (10" x 7")	156	58
254 x 203 mm (10" x 8")	146	54
279 x 216 mm (Letter / 11" x 8.5")	132	49
305 x 305 mm (12" x 12")	106	38

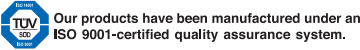
\*1 Using Noritsu proprietary inkjet paper  
(Calculated according to our criteria. The capacity you achieve may be different.)  
\*2 The capacities listed for 152 mm (6") and smaller print sizes represent the capacity when two paper rolls of the same width and same surface are loaded in a two-lane magazine.  
\*3 The above figures signify single-sided print capacity.



Noritsu Precision Co., Ltd.

579-1 UMEHARA, WAKAYAMA-SHI, 640-8550, JAPAN  
PHONE:(81)73-454-0345 FACSIMILE:(81)73-454-0301  
http://www.noritsu-precision.com

The specifications, information, and appearance of the machine herein are subject to change without notice.



QSS & AccuSmart™ are trademarks of Noritsu Precision Co., Ltd.

All other product and company names herein may be trademarks of their respective owners.

NORITSU  
PRECISION

QSS GreenIII

The best just got better





# Enhanced value

With QSS Green III's wide variety of print services, you can provide new ways for your customers to enjoy their photos.

## Print Size Advantage

### Enlargements / Panoramas

QSS Green III can make enlargements in sizes of 254 x 305 mm (10" x 12"), 305 x 457 mm (12" x 18"), and many other sizes, including panorama prints all the way up to 305 x 1,400 mm (12" x 55"). This enables you to provide personalized photo products such as poster prints, locker prints, and just about any custom print size you can think of.

### Maximum print size

Roll Paper **305 x 1,400 mm**  
(12" x 55")

Sheet Paper **330 x 635 mm**  
(13" x 25")

\* Prints made on sheet paper that exceeds 305 mm (12") in width will have borders on both sides in the width direction.



Enlargement print  
305 x 457 mm (12" x 18")

### Panorama print



Maximum paper advance length  
**1,400 mm (55")**



## High Performance

### High capacity enabling a steady turnover

Print capacity is the key to maintaining smooth and steady profits. QSS Green III enables you to quickly fulfill urgent orders of any size without sacrificing its top-level print quality.

6" x 4" (152 x 102 mm)

approx. **950** prints/hour

10" x 8" (254 x 203 mm)

approx. **305** prints/hour

12" x 10" (305 x 254 mm)

approx. **223** prints/hour

\* When outputting at 720 dpi

## Compact size

### Use less space to sell more with this compact minilab

QSS Green III has a space-saving design that makes it easy to install anywhere. Maximum sales from minimum floor space. That's what QSS Green III is about.

Footprint **0.69m<sup>2</sup>**  
(7.43 sq.feet)

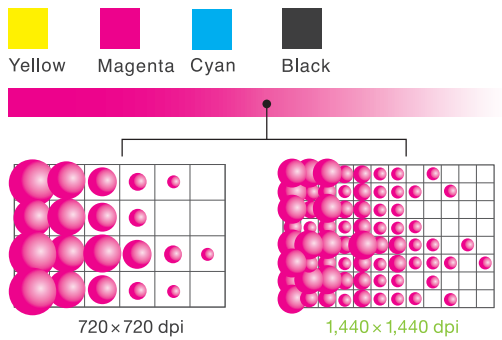
# Enhanced quality

Using the technology Noritsu has developed over the years as a leader in silver halide printing, QSS Green III delivers a level of quality that exceeds all expectations.

## High quality & High resolution

### Beautiful sharp prints with multiple dot gradation dye ink system

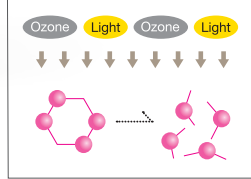
QSS Green III uses a high-grade dye ink system that accurately portrays fine details due to its multiple dot gradation technology. The high quality ink, combined with the excellent absorbing quality of the paper, enables QSS Green III to produce outstanding print quality.



### High grade ink that produces long lasting colors

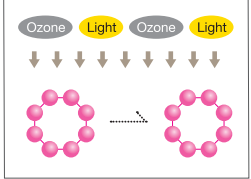
Prints made with conventional dye ink tend to fade quickly. However, the ink used in QSS Green III enables to withstand light and ozone. This is why QSS Green III prints boast excellent lightfastness and long lasting colors.

#### Molecular structure of conventional dye ink



Molecular structures are partly weak. Results in deterioration and fading.

#### Molecular structure of QSS Green III dye ink



Molecular structures are stronger and difficult to decompose. This enables to withstand deterioration, ensuring that your prints will be enjoyed for generations.

### Two profiles to choose from

There are two profiles available as a standard feature for QSS Green III - A profile to emulate traditional printing (AgX) and a full color inkjet (IJ) gamut profile that explodes with colors well beyond the traditional look. The profile can be easily changed anytime to meet individual needs.



AgX Profile



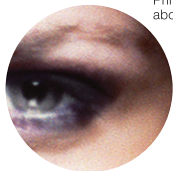
IJ Profile

### QSS Green III can make impressive 1,440 x 1,440 dpi high-resolution prints

1,440 x 1,440 dpi high resolution prints are less grainy and have smoother gradations than standard prints. Furthermore, this improvement in terms of graininess has the effect of producing a better portrayal of contrast, texture and depth.



720 x 720 dpi



1,440 x 1,440 dpi

Different resolutions (the standard 720 dpi or the high resolution 1,440 dpi) can be registered in different print channels in EZ Controller. This enables you to easily change the resolution by simply changing print channels.

Print magnification about 5 mm

## RAW file printing

### High quality prints from RAW image files



Adobe's DNG conversion technology is incorporated in EZ Controller software along with Noritsu's AccuSmart image processing technology. This means you can easily make high quality prints from RAW image files without using separate RAW file conversion software.

## Optimize the image with EZ Controller

**EZ Controller** (Sold separately)

In addition to serving the important role of system operation software, EZ Controller has a wealth of advanced image correction functions to correct sharpness, contrast, noise, backlight, red-eye, and under/over exposure, etc.

### JPEG data



A large portion of the pixel data in the original JPEG image has highlight areas that are too light. When the image is corrected, the overall light in the image is reduced, but the pixels representing the highlight areas that were too light are unsalvageable.

### RAW data



All gradations are used, producing an image that is balanced well. There are very few pixels with shadows that are too dark and highlights that are too light.



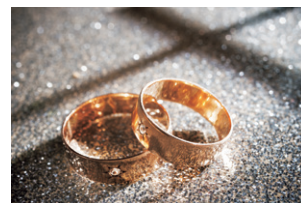


## Paper Advantage

### A wide variety of paper \*1

With more paper to choose from, QSS Green III increases the range of value-added products you can offer. Single-sided prints, duplex prints, photo books and many other unique value-added products are all possible with this versatile minilab.

#### Pearlescent paper prints



Classy-look with glittering paper

#### Square prints



102 x 102 mm (4" x 4")

#### Collage prints



#### Duplex prints



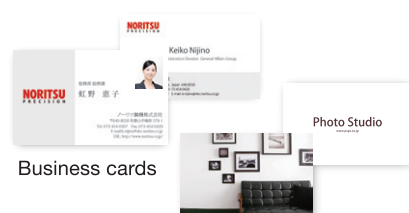
Photo books



Photo calendars



Greeting cards



Business cards

\*1 In case of using non-Genuine Noritsu paper, QSS Green III only supports sheet paper with thicknesses in the range of 0.170 to 0.400 mm. Print quality and/or mechanical failure related to the use of non-Genuine Noritsu papers may not be covered by Noritsu warranty and/or your local dealer service program/s.

## Roll Paper

### Dual magazine system supporting a countless variety of print sizes

This dual magazine system supports 2-lane paper magazines enabling up to 4 paper rolls (Width 89 to 152 mm / 3.5" to 6"). The feature provides a seemingly infinite variety of print sizes.

#### Example 1



Paper rolls with different paper widths

#### Example 2



Paper rolls with different paper surfaces



## Enhanced business

With its high capacity and labor-saving features, QSS Green III has what photo retailers need.

## Sheet Paper

### Supports sheet paper as well as roll paper

QSS Green III can produce prints from both roll paper and sheet paper. Sheet paper gives you the ability to produce high quality duplex prints, which open the door to a whole new realm of exciting value-added print possibilities.



## Automatic Order Sorting

### Two print sorters to choose from

You can choose the 4-order print sorter or the 12-order print sorter.



### LED lights to signify interrupted orders

EZ Controller software has always had the unique ability to interrupt orders in process to give preference to urgent orders. Now, with the 12-order print sorter, LED lights are used to signify which tray has the urgent order and which trays have the order that has been interrupted.



## Economical / Eco-Friendly

### Easy to use, easy on your wallet, and easy on the environment

There are no photofinishing chemicals involved with dry systems. This brings a reduction in time and costs as you no longer have to be concerned about maintaining specific chemistry temperatures as well as handling and disposing of chemical solutions plus many other troublesome tasks. With the exception of paper, the only consumable replacement needed for this environmentally-friendly minilab is the ink cartridge. This function can easily be done by anyone.



Easy ink cartridge replacement

### Energy-efficient

QSS Green III can help you cut your electricity bill drastically. It is estimated to use only about 1/3 to 1/5 the amount of electricity that silver halide minilabs use. This reduction in power consumption makes it both economically-friendly and ecologically-friendly.

#### Silver halide minilabs

QSS Green III  
Approx. **1/3** to **1/5**

\*Compared to Noritsu silver halide minilabs. Exact amount varies depending on the model.



# Enhanced value

With QSS Green III's wide variety of print services, you can provide new ways for your customers to enjoy their photos.

## Print Size Advantage

### Enlargements / Panoramas

QSS Green III can make enlargements in sizes of 254 x 305 mm (10" x 12"), 305 x 457 mm (12" x 18"), and many other sizes, including panorama prints all the way up to 305 x 1,400 mm (12" x 55"). This enables you to provide personalized photo products such as poster prints, locker prints, and just about any custom print size you can think of.

### Maximum print size

Roll Paper **305 x 1,400 mm**  
(12" x 55")

Sheet Paper **330 x 635 mm**  
(13" x 25")

\* Prints made on sheet paper that exceeds 305 mm (12") in width will have borders on both sides in the width direction.

### Panorama print



Maximum paper advance length  
**1,400 mm (55")**



Enlargement print  
305 x 457 mm (12" x 18")



## Paper Advantage

### A wide variety of paper \*1

With more paper to choose from, QSS Green III increases the range of value-added products you can offer. Single-sided prints, duplex prints, photo books and many other unique value-added products are all possible with this versatile minilab.

### Pearlescent paper prints



Classy-look with glittering paper

### Square prints



102 x 102 mm (4" x 4")

### Collage prints



### Duplex prints



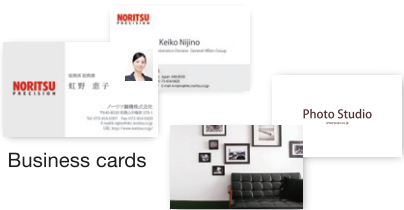
Photo books



Photo calendars



Greeting cards



Business cards



Photo Studio

\*1 In case of using non-Genuine Noritsu paper, QSS Green III only supports sheet paper with thicknesses in the range of 0.170 to 0.400 mm. Print quality and/or mechanical failure related to the use of non-Genuine Noritsu papers may not be covered by Noritsu warranty and/or your local dealer service program/s.

# Enhanced business

With its high capacity and labor-saving features, QSS Green III has what photo retailers need.

## Sheet Paper

### Supports sheet paper as well as roll paper

QSS Green III can produce prints from both roll paper and sheet paper. Sheet paper gives you the ability to produce high quality duplex prints, which open the door to a whole new realm of exciting value-added print possibilities.



## Automatic Order Sorting

### Two print sorters to choose from

You can choose the 4-order print sorter or the 12-order print sorter.



## LED lights to signify interrupted orders

EZ Controller software has always had the unique ability to interrupt orders in process to give preference to urgent orders. Now, with the 12-order print sorter, LED lights are used to signify which tray has the urgent order and which trays have the order that has been interrupted.

## Economical / Eco-Friendly

### Easy to use, easy on your wallet, and easy on the environment

There are no photofinishing chemicals involved with dry systems. This brings a reduction in time and costs as you no longer have to be concerned about maintaining specific chemistry temperatures as well as handling and disposing of chemical solutions plus many other troublesome tasks. With the exception of paper, the only consumable replacement needed for this environmentally-friendly minilab is the ink cartridge. This function can easily be done by anyone.



Easy ink cartridge replacement

## Energy-efficient

QSS Green III can help you cut your electricity bill drastically. It is estimated to use only about 1/3 to 1/5 the amount of electricity that silver halide minilabs use. This reduction in power consumption makes it both economically-friendly and ecologically-friendly.

Silver halide minilabs
QSS Green III
Approx. <b>1/3 to 1/5</b>

\*Compared to Noritsu silver halide minilabs. Exact amount varies depending on the model.

## High Performance

### High capacity enabling a steady turnover

Print capacity is the key to maintaining smooth and steady profits. QSS Green III enables you to quickly fulfill urgent orders of any size without sacrificing its top-level print quality.

6" x 4" (152 x 102 mm)

approx. **950** prints/hour

10" x 8" (254 x 203 mm)

approx. **305** prints/hour

12" x 10" (305 x 254 mm)

approx. **223** prints/hour

\* When outputting at 720 dpi

## Compact size

### Use less space to sell more with this compact minilab

QSS Green III has a space-saving design that makes it easy to install anywhere. Maximum sales from minimum floor space. That's what QSS Green III is about.

Footprint **0.69m<sup>2</sup>**  
(7.43 sq.feet)

## Roll Paper

### Dual magazine system supporting a countless variety of print sizes

This dual magazine system supports 2-lane paper magazines enabling up to 4 paper rolls (Width 89 to 152 mm / 3.5" to 6"). The feature provides a seemingly infinite variety of print sizes.

### Example 1



Paper rolls with different paper widths

### Example 2



Paper rolls with different paper surfaces

